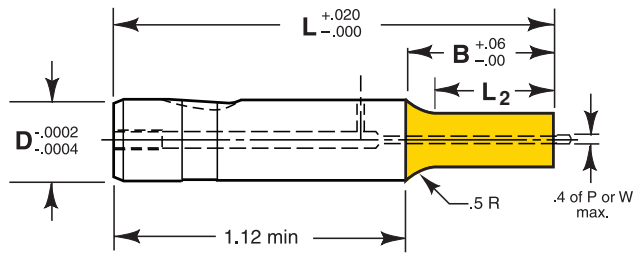


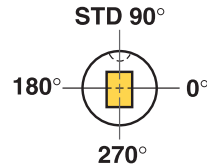
PORTER Light Duty Bal-Lok Retracto Punch (BR-)



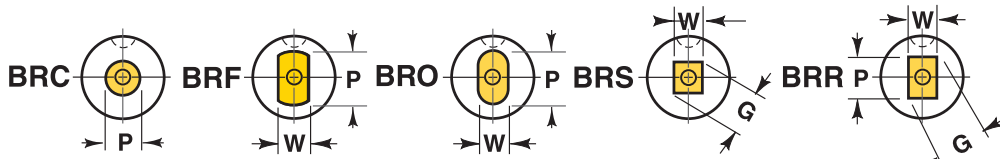
Steel: M2 Rc 60-63
TOLERANCES
 Round P $\begin{matrix} +.0005 \\ -.0000 \end{matrix}$ $\text{\textcircled{P}}$.0005 P to D
 Shape P, W $\pm .0005$ $\text{\textcircled{P,W}}$.001 P,W to D
 Manufactured to ANSI and NAPMA Standards where applicable.
 Back Draft .001/inch L₂ max.

Ordering Example:

Qty Steel Type D B L W P
 12 M2 BRO 62 C x 3.00 x .350 x .600



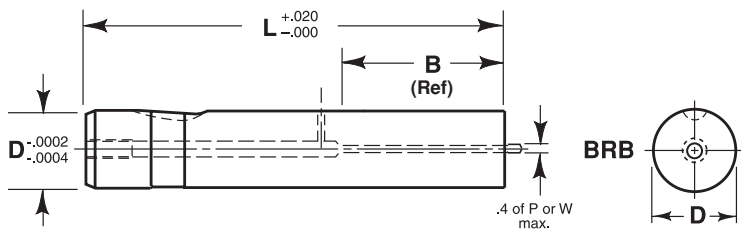
Standard ball seat location is at 90° using reflected view for punches. Alternate locations of 0°, 180° and 270° are available at no extra charge. Custom ball seat locations can be specified as number of degrees counterclockwise from 0° Example call out: BS 180°



Shank		Point Length B				Lengths L in .25" Increments	Point			Replacement Retracto Kit*
D	Code No	Standard	Alternates				Round	Shape		
		S	B(.75)	C(1.0)	D(1.25)		Range P	Min W	Max P/G	
.250	25	.500	●			2.00 thru 3.75	.062 – .249	.062	.249	K2I
.375	37	.625	●	●		2.00 thru 4.25	.125 – .374	.125	.374	K4I
.500	50	.750	●	●	●	2.00 thru 4.25	.187 – .499	.187	.499	K6I
.625	62	.875	●	●	●	2.25 thru 4.25	.312 – .624	.250	.624	K6I
.750	75	.937	●	●	●	2.25 thru 4.25	.437 – .749	.312	.749	K9I
.875	87	.937	●	●	●	2.25 thru 4.25	.625 – .874	.375	.874	K9I
1.000	100	.937	●	●	●	2.25 thru 4.25	.750 – .999	.437	.999	K9I
1.250	125	1.000	●	●	●	2.25 thru 4.25	.875 – 1.249	.500	1.249	K12I

*Retracto kits available see page 36 for details. Retracto Punches 1.25 ϕ = no side hole.

PORTER Light Duty Bal-Lok Retracto Punch Blank (BRB)



Ordering Example:

Qty Steel Type D B L
 25 M2 BRB 50 C x 3.50

Shank		Point Length B				Lengths L in .25" Increments	Replacement Retracto Kit*
D	Code No	Standard	Alternates				
		S	B(.75)	C(1.0)	D(1.25)		
.250	25	.500	●			2.00 thru 3.75	K2I
.375	37	.625	●	●		2.00 thru 4.25	K4I
.500	50	.750	●	●	●	2.00 thru 4.25	K6I
.625	62	.875	●	●	●	2.25 thru 4.25	K6I
.750	75	.937	●	●	●	2.25 thru 4.25	K9I
.875	87	.937	●	●	●	2.25 thru 4.25	K9I
1.000	100	.937	●	●	●	2.25 thru 4.25	K9I
1.250	125	1.000	●	●	●	2.25 thru 4.25	K12I

*Retracto kits available see page 36 for details. Retracto Punches 1.25 ϕ = no side hole.

Standard Alterations are changes that are beyond the ranges listed in the catalog that can be altered for a minimal charge. See page 37.

For additional standard forms and configurations see pages 32 and 33.