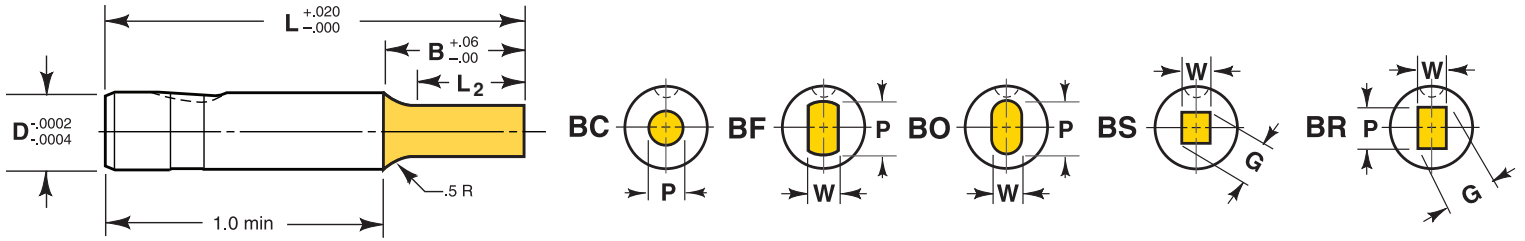
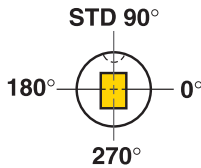


PORTER Light Duty Bal-Lok Solid Punch (B-)



Ordering Example:

Qty Steel Type D B L P
12 M2 BC 62 S x 3.00 x .600



Standard ball seat location is at 90° using reflected view for punches. Alternate locations of 0°, 180° and 270° are available at no extra charge. Custom ball seat locations can be specified as number of degrees counterclockwise from 0° Example call out: BS 180°

Steel: M2 Rc 60-63

TOLERANCES

Round P $\begin{matrix} +.0005 \\ -.0000 \end{matrix}$ $\text{Ⓞ} .0005$ P to D

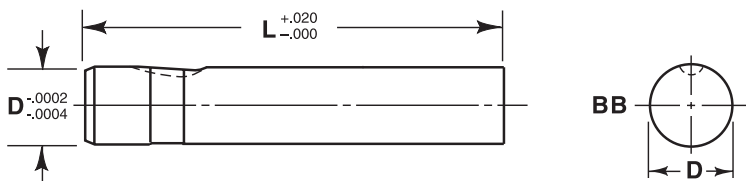
Shape P, W $\pm .0005$ $\text{Ⓞ} .001$ P, W to D

Manufactured to ANSI and NAPMA Standards where applicable.

Back Draft .001/inch L₂ max.

Shank		Point Length B				Lengths L in .25" Increments	Point		
D	Code No	Standard S	Alternates				Round	Shape	
			B(.75)	C(1.0)	D(1.25)		Range P	Min W	Max P/G
.250	25	.500	●			.062 – .249	.062	.249	
.375	37	.625	●	●		.125 – .374	.125	.374	
.500	50	.750	●	●	●	.187 – .499	.187	.499	
.625	62	.875	●	●	●	.312 – .624	.250	.624	
.750	75	.937	●	●	●	.437 – .749	.312	.749	
.875	87	.937	●	●	●	.625 – .874	.375	.874	
1.000	100	.937	●	●	●	.750 – .999	.437	.999	
1.250	125	1.000	●	●	●	.875 – 1.249	.500	1.249	

PORTER Light Duty Bal-Lok Punch Blank (BB)



Ordering Example:

Qty Steel Type D L
25 M2 BB 62 x 4.75

Shank		Lengths L in .25" Increments
D	Code No.	
.250	25	2.00 thru 4.00
.375	37	2.00 thru 4.50
.500	50	2.00 thru 6.00
.625	62	2.25 thru 6.00
.750	75	2.25 thru 6.00
.875	87	2.25 thru 6.00
1.000	100	2.25 thru 6.00
1.250	125	2.25 thru 4.25

Standard Alterations are changes that are beyond the ranges listed in the catalog that can be altered for a minimal charge. See page 37.

For additional standard forms and configurations see pages 32 and 33.