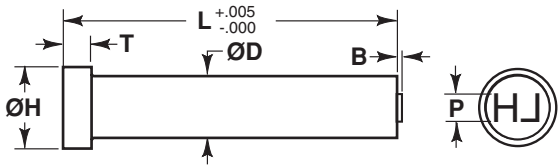


PORTER *Marking Punches and Custom Stamps*



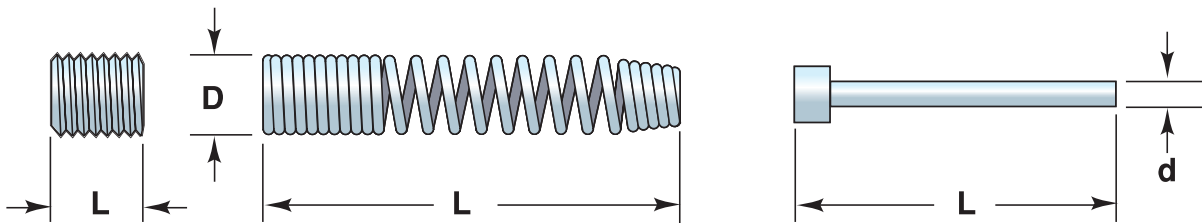
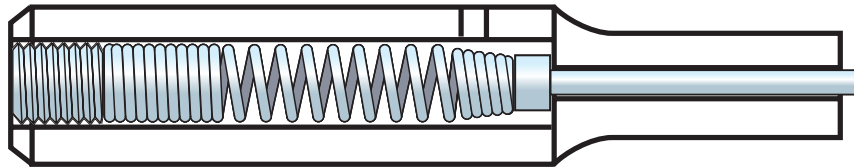
Many custom stamps and marking punches are available from Porter. Please identify punch style as part of the order. All tolerances on punch body other than (L) will be manufactured to catalog standards unless otherwise specified by the customer.



Ordering Example (Specify punch style) Drawings Required

| Qty | Steel Type | D | L | P | B |
|-----|------------|----------|--------|--------|------|
| 12 | M-2 | ()MP 50 | x 3.00 | x .375 | .093 |

PORTER *Retrakto Replacement Components*



| Replacement Retrakto Kit | Punch Type | | Set Screw | Spring | | | Pin | | | Pin Extension Length |
|--------------------------|------------|---------|-----------------|--------|------|--------|------|------|------|----------------------|
| | Headed | Bal-Lok | Size/Length | Hole-D | D | L | Hole | L | d | |
| K2I | 18 | 25 | 3"-48 x 1/8" | .086 | .081 | 2" | .020 | 1.11 | .017 | .03 |
| K3I | 25 | N/A | 5"-40 x 1/8" | .109 | .104 | 2 1/2" | .032 | 1.38 | .027 | .03 |
| K4I | 31 | 37 | 8"-32 x 3/16" | .141 | .136 | 2 7/8" | .046 | 1.94 | .041 | .06 |
| K6I | 37-50 | 50-62 | 10"-32 x 1/4" | .172 | .167 | 2 7/8" | .063 | 1.94 | .058 | .06 |
| K9I | 62-100 | 75-100 | 1/4"-28 x 1/4" | .221 | .216 | 3" | .094 | 2.22 | .089 | .06 |
| K12I | 125 & > | 125 | 5/16"-24 x 1/4" | .275 | .270 | 3" | .125 | 2.22 | .120 | .06 |

Kit includes 1 each – set screw
– spring
– pin

Components available as kits or separately.

Retrakto Springs and pins are cut to length at assembly.