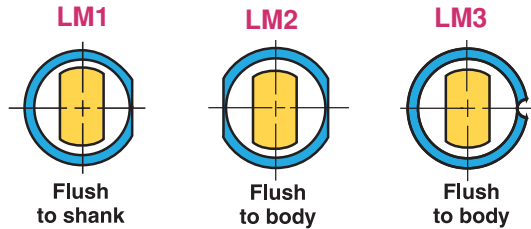
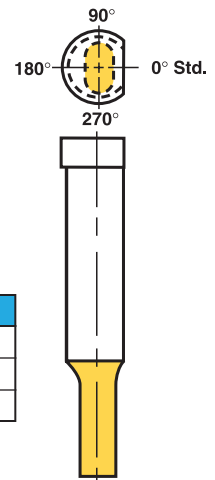


Standard Locating Methods		
Flat		Depth
LM1	F =	.5D
LM2	F =	.5D
LM3	F =	.5D (R=.0625)
LM4	F =	.5D
LM5	F =	.5D



LF2 (Punch)



All above locating methods are supplied at standard location (0°) "Alternate locations 90°, 180°, and 270° are available at no extra charge" Call out (LM1 @90)

Custom locations (other than 0°, 90°, 180° and 270°)

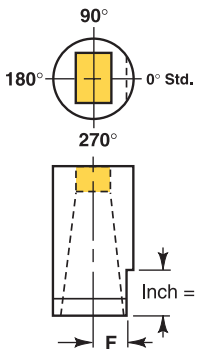
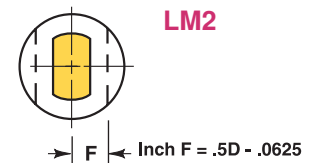
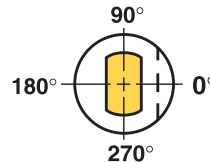
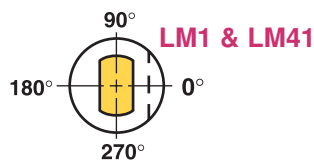
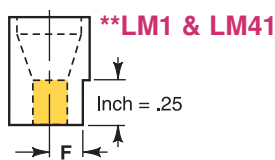
LM4= Single Flat Custom Location (LM4@45)

LM5= Double Flat Custom Location (LM5@225)

Additional variations available (consult factory or supply drawings of requirement)

Full Length Punch Flats

LF2	F=	.5D-.060
LF21	F=	.5D-.093
LF22	F=	Specify

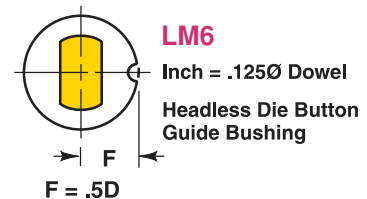


Call Out	D*	F Dimension Listing																				
		.18	.25	.31	.37	.43	.50	.62	.75	.87	1.00	1.12	1.25	1.37	1.50	1.62	1.75	2.00	2.25	2.50	2.75	3.00
LM1	F =	.5D - .0625																				
LM2	F =	.5D - .0625																				
LM4	F =	.5D - .0625																				
LM41	F =	.080	.110	.135	.165	.190	.220	.270	.325	.380	.435	.4875	.540	.5875	.650	.7125	.775	.900	1.025	1.150	1.275	1.400
LM5	F =	.5D - .0625																				

*Additional variations available (consult factory or supply drawings of requirement)

**Above flats available on Cutting end at no additional charge (Example LM1C)

Inch Dowel Slot								
Call Out	Dowel Dia.	D=	25	31	37	43	50	62-300
LM6	.125	F =	.125	.1562	.1875	.2188	.250	.5D
LM8	.125	F =	.125	.1562	.1875	.2188	.250	.5D
LM63	.125	F =	.1625	.1875	.2125	.2375	.2625	.5D
LM64	.1875	F =	.1938	.2188	.2438	.2688	.2938	.5D



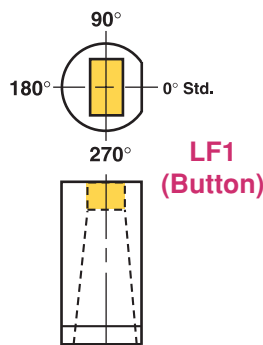
Custom locations (other than 0°, 90°, 180° and 270°)

LM8= Dowel Slot Custom Location (LM8@45)

TOLERANCES ON ALL FLATS

Standard Precision $\pm .0005$ to C/L
 $-.0000$
.001/1.000 Parallel

Ultra Precision $\pm .0002$ to C/L
 $-.0000$
.0005/1.000 Parallel



Full Length Die Flat		
LF1	F =	.5D-.060
LF11	F =	.5D-.093
LF12	F =	Specify

LM43, LM44, LM45, LM46,
LM47, LM48, LM49
(Flat is on cutting-End)

Call Out	Depth	Length
LM43	.06	.50
LM44	.06	.62
LM45	.06	.75
LM46	SPECIFY	
LM47	.093	.50
LM48	.093	.62
LM49	.093	.75

