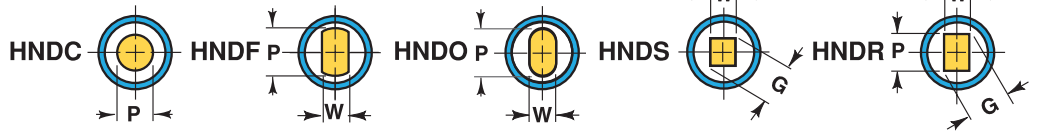
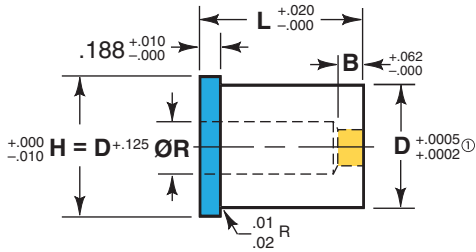
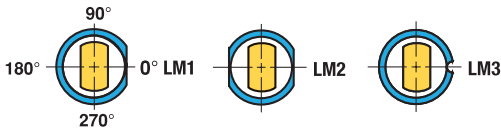


# PORTER Standard Headed Die Button (HND-)



### Ordering Example:

Qty Steel Type D L P  
4 M2 HNDC 75 x 1.25 x .390



Optional Locating Methods See Page 38 for details and options.

Steel: M2 Rc 60-63

### TOLERANCES

Round P  $\begin{matrix} +.0005 \\ -.0000 \end{matrix}$   $\text{⊙} .0005$  P to D

Shape P, W  $\begin{matrix} +.001 \\ -.000 \end{matrix}$   $\text{⊙} .001$  P,W to D

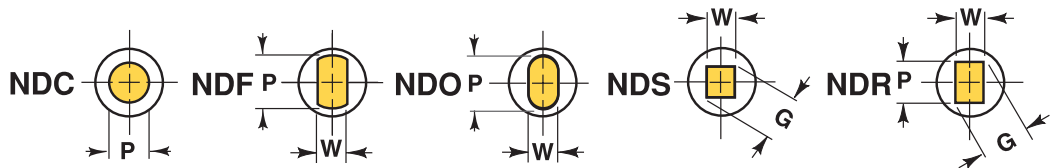
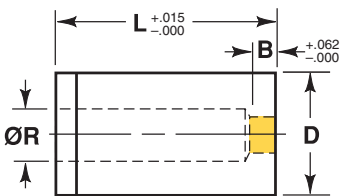
Manufactured to ANSI and NAPMA Standards where applicable.

① D Tol =  $\begin{matrix} +.0006 \\ +.0002 \end{matrix}$

| Body D** | Code No. | Min. B* | Max. R | Lengths L (ND) Headless & (HND-) Headed |     |     |      |       |       |       |       | Round ID |               | Shape ID |          |
|----------|----------|---------|--------|---|-----|-----|------|-------|-------|-------|-------|----------|---------------|----------|----------|
|          |          |         |        | .75                                     | .87 | .93 | 1.00 | 1.125 | 1.188 | 1.250 | 1.375 | 1.500    | Range P       | Min. W   | Max. P/G |
| .2500    | 25       | .156    | .156   | ●                                       | ●   | N   | ●    | ●     | N     | ●     |       |          | .064 – .125   | –        | –        |
| .3125    | 31       | .156    | .195   | N                                       | N   | N   | N    | N     | N     | N     |       |          | .064 – .155   | –        | –        |
| .3750    | 37       | .156    | .228   | ●                                       | ●   | N   | ●    | ●     | N     | ●     | N     | ●        | .064 – .195   | .048     | .195     |
| .5000    | 50       | .156    | .312   | ●                                       | ●   | N   | ●    | ●     | N     | ●     | N     | ●        | .064 – .285   | .064     | .285     |
| .6250    | 62       | .187    | .391   | ●                                       | ●   | N   | ●    | ●     | N     | ●     | N     | ●        | .136 – .365   | .095     | .365     |
| .7500    | 75       | .187    | .468   | ●                                       | ●   | N   | ●    | ●     | N     | ●     | N     | ●        | .136 – .435   | .135     | .435     |
| .8750    | 87       | .187    | .578   | ●                                       | ●   | N   | ●    | ●     | N     | ●     | N     | ●        | .276 – .545   | .135     | .545     |
| 1.0000   | 100      | .250    | .703   | ●                                       | ●   | N   | ●    | ●     | N     | ●     | N     | ●        | .356 – .675   | .135     | .675     |
| 1.2500   | 125      | .250    | .828   | ●                                       | ●   | N   | ●    | ●     | N     | ●     | N     | ●        | .500 – .800   | .189     | .800     |
| 1.5000   | 150      | .250    | 1.094  | ●                                       | ●   | N   | ●    | ●     | N     | ●     | N     | ●        | .616 – 1.050  | .252     | 1.050    |
| 1.7500   | 175 ①    | .312    | 1.438  |   |     | N   | N    | N     | N     | N     | N     | N        | .750 – 1.408  | .252     | 1.408    |
| 2.0000   | 200 ①    | .312    | 1.630  |   |     | N   | N    | N     | N     | N     | N     | N        | .875 – 1.600  | .252     | 1.600    |
| 2.2500   | 225 ①    | .312    | 1.830  |   |     | N   | N    | N     | N     | N     | N     | N        | 1.000 – 1.800 | .314     | 1.800    |
| 2.5000   | 250 ①    | .312    | 2.030  |   |     | N   | N    | N     | N     | N     | N     | N        | 1.125 – 2.000 | .377     | 2.000    |

\*\* D Ø > 1.500 M-2 (HSS) Steel only. \* Alternate "B" lengths available see page 16 (Taper Relief Dies). N = ND only. ● Available Both HND & ND

# PORTER Standard Headless Die Button (ND-)



### Ordering Example:

Qty Steel Type D L W P Locate  
6 M2 NDO 100 x 1.25 x .305 x .605 LM1



Optional Locating Methods See Page 38 for details and options.

Standard Alterations are changes that are beyond the ranges listed in the catalog that can be altered for a minimal charge. See page 37.

For additional standard forms and configurations see pages 32 and 33.