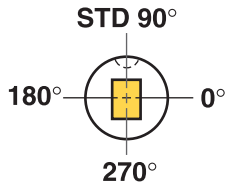


Ordering Example:

Qty Steel Type Code L₂/L W P
 10 M2 BRB 010 1971 3.00 x 5.50



Standard ball seat location is at 90° using reflected view for punches. Alternate locations of 0°, 180° and 270° are available at no extra charge. Custom ball seat locations can be specified as number of degrees counterclockwise from 0°
 Example call out: BS 180°

Steel: M2 Rc 60-63

TOLERANCES

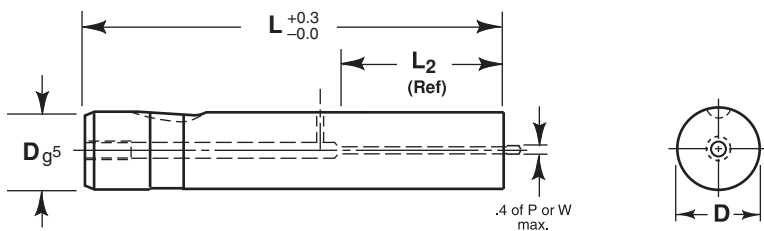
Round P $^{+0.01}_{-0.00}$ Ⓢ 0.01 P to D

Shape P, W ± 0.01 Ⓢ 0.02 P,W to D

Manufactured to ISO and NAPMA standards where applicable.
 Back Draft 0.1/100mm L₂ max.

Shank		Point Length			Lengths					Point		Replacement Retracto Kit*	
D mm	Code No.	L ₂			L					Round Range P	Shape		
		Std.	Alt.	Alt.	63	71	80	90	100		Min W		Max P/G
6	006	13	10		●	●	●	●	●	2.10 – 5.97	2.10	5.97	K3M
10	010	19	10		●	●	●	●	●	2.10 – 9.97	2.10	9.97	K3M
13	013	19	13		●	●	●	●	●	5.00 – 12.97	4.50	12.97	K6M
16	016	19	13	25	●	●	●	●	●	8.00 – 15.97	6.00	15.97	K6M
20	020	19	13	25	●	●	●	●	●	12.00 – 19.97	8.00	19.97	K9M
25	025	19	13	25	●	●	●	●	●	16.00 – 24.97	10.00	24.97	K9M
32	032	19	13	25		●	●	●	●	24.00 – 31.97	12.50	31.97	K12M
38	038	25	19	30			●	●	●	30.00 – 39.97	14.00	39.97	K12M

*Retracto kits available see page 36 for details. 32 mm Ø + larger = no side hole



Ordering Example:

Qty Steel Type Code L₂/L
 15 M2 BRB 025 1380

Shank		Point Length			Lengths					Replacement Retracto Kit*
D mm	Code No.	L ₂			L					
		Std.	Alt.	Alt.	63	71	80	90	100	
6	006	13	10		●	●	●	●	●	K3M
10	010	19	10		●	●	●	●	●	K3M
13	013	19	13		●	●	●	●	●	K6M
16	016	19	13	25	●	●	●	●	●	K6M
20	020	19	13	25	●	●	●	●	●	K9M
25	025	19	13	25	●	●	●	●	●	K9M
32	032	19	13	25		●	●	●	●	K12M
38	038	25	19	30			●	●	●	K12M

*Retracto kits available see page 36 for details. 32 mm Ø + larger = no side hole