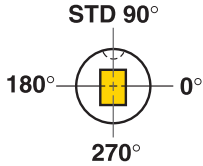


### Ordering Example:

Qty Steel Type Code L<sub>2</sub>/L W P  
15 M2 BS 025 2580 13.00 x 13.00



Standard ball seat location is at 90° using reflected view for punches. Alternate locations of 0°, 180° and 270° are available at no extra charge. Custom ball seat locations can be specified as number of degrees counterclockwise from 0° Example call out: BS 180°

Steel: M2 Rc 60-63

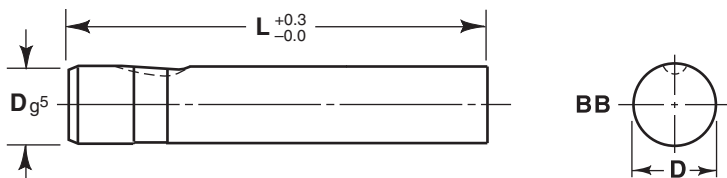
### TOLERANCES

Round P  $\begin{matrix} +0.01 \\ -0.00 \end{matrix}$   $\text{\textcircled{P}}$  0.01 P to D

Shape P, W  $\pm 0.01$   $\text{\textcircled{P,W}}$  0.02 P,W to D

Manufactured to ISO and NAPMA standards where applicable.  
Back Draft 0.1/100mm L<sub>2</sub> max.

Shank		Point Length L <sub>2</sub>			Lengths L								Point		
D	Code	Std.	Alt.	Alt.	63	71	80	90	100	107	118	131	Round Range P	Shape	
mm	No.													Min W	Max P/G
6	006	13	10		●	●	●	●	●	●			2.10 – 5.97	2.10	5.97
10	010	19	10		●	●	●	●	●	●	●		2.10 – 9.97	2.10	9.97
13	013	19	13	25	●	●	●	●	●	●	●	●	5.00 – 12.97	4.50	12.97
16	016	19	13	25	●	●	●	●	●	●	●	●	8.00 – 15.97	6.00	15.97
20	020	19	13	25	●	●	●	●	●	●	●	●	12.00 – 19.97	8.00	19.97
25	025	19	13	25	●	●	●	●	●	●	●	●	16.00 – 24.97	10.00	24.97
32	032	19	13	25		●	●	●	●	●	●	●	24.00 – 31.97	12.50	31.97
38	038	25	19	30			●	●	●	●	●	●	30.00 – 37.97	14.00	37.97



### Ordering Example:

Qty Steel Type Code L  
25 M2 BB 016 80

Shank		Lengths L							
D	Code No.	63	71	80	90	100	107	118	131
6	006	●	●	●	●	●	●		
10	010	●	●	●	●	●	●	●	
13	013	●	●	●	●	●	●	●	●
16	016	●	●	●	●	●	●	●	●
20	020	●	●	●	●	●	●	●	●
25	025	●	●	●	●	●	●	●	●
32	032		●	●	●	●	●	●	●
38	038			●	●	●	●	●	●