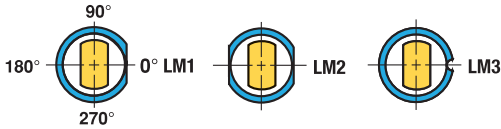


Ordering Example:

Qty Steel Type Code L P
6 M2 HNDC 020 x 25 x 11.00



Optional Locating Methods See Page 38 for details and options.

Steel: M2 Rc 60-63

TOLERANCES

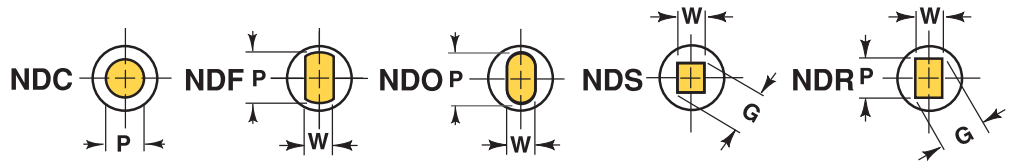
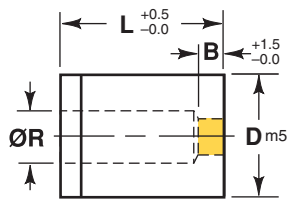
Round P $\begin{matrix} +0.01 \\ -0.00 \end{matrix}$ $\text{Ⓢ} 0.01$ P to D

Shape P, W ± 0.01 $\text{Ⓢ} 0.02$ P, W to D

Manufactured to ISO and NAPMA standards where applicable.

Body D	Code No.	Land B**	Max. R	Lengths								Round ID	Shape ID	
				19	20	22	25	28	30	32	35	Range P	Min. W	Max. P/G
8	008	4	4	●	●	●	●	●	●	●	●	1.5 – 3.2	–	–
10	010	4	6	●	●	●	●	●	●	●	●	1.5 – 5.0	1.5	5.0
13	013	5	8	●	●	●	●	●	●	●	●	1.5 – 7.2	1.5	7.2
16	016	5	9.5	●	●	●	●	●	●	●	●	5.0 – 8.8	1.9	8.8
20	020	5	12	●	●	●	●	●	●	●	●	7.0 – 11.0	1.9	11.0
22	022	6	15	●	●	●	●	●	●	●	●	9.0 – 14.0	1.9	14.0
25	025	6	17.5	●	●	●	●	●	●	●	●	11.0 – 16.5	1.9	16.5
32	032	6	21	●	●	●	●	●	●	●	●	13.0 – 20.0	4.0	20.0
38	038	8	27		●	●	●	●	●	●	●	16.0 – 26.0	4.0	26.0
40	040	8	27		●	●	●	●	●	●	●	16.0 – 26.0	4.0	26.0
45	045	8	36			●	●	●	●	●	●	19.0 – 35.0	8.0	35.0
50	050	8	41			●	●	●	●	●	●	22.0 – 40.0	9.0	40.0
56	056	8	46			●	●	●	●	●	●	25.0 – 45.0	10.0	45.0
63	063	8	51			●	●	●	●	●	●	28.0 – 50.0	11.0	50.0
71	071	8	57			●	●	●	●	●	●	31.0 – 56.0	12.0	56.0
76	076	8	61			●	●	●	●	●	●	39.0 – 60.0	15.0	60.0

N = Available ND only. ● Available HND & ND **Additional Land lengths available see page 8 (Taper Relief Dies)



Ordering Example:

Qty Steel Type Code L W P Locate
6 M2 NDR 016 x 25 x 4.20 x 5.40 LM1



Optional Locating Methods See Page 38 for details and options.

Standard Alterations are changes that are beyond the ranges listed in the catalog that can be altered for a minimal charge. See page 37.

For additional standard forms and configurations see pages 32 and 33.