

GLC ● GDC ● GUC ●

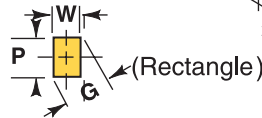
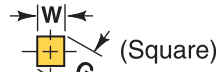
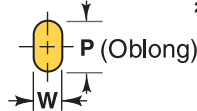
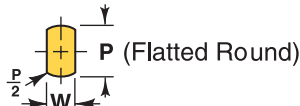
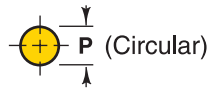
GLF ■ GDF ■ GUF ■

GLO ● GDO ● GUO ●

GLS ■ GDS ■ GUS ■

GLR ■ GDR ■ GUR ■

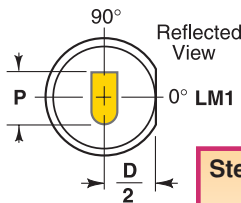
GLZ ● GDZ ● GUZ ●



Additional Standard Forms (Z) See pages 32 and 33.

Body ØD	Code No.	Length L			Circular ID Range P	Shape ID		ØC ±0.12	Match Punch Shank Ø
		10.0	13.0	16.0		Min. W	Max. P/G		
6.0	006	●	●	●	1.50-4.00	1.50	4.00	4.37	4.0
8.0	008	●	●	●	1.50-5.00	1.50	5.00	5.37	5.0
10.0	010	●	●	●	1.50-6.00	1.50	6.00	6.37	6.0
13.0	013		●	●	2.50-8.00	2.00	8.00	8.37	8.0
16.0	016		●	●	3.50-10.00	3.20	10.00	10.37	10.0
20.0	020		●	●	5.50-13.00	4.50	13.00	13.37	13.0
22.0	022		●	●	8.00-16.00	6.00	16.00	16.37	16.0
25.0	025			●	10.00-20.00	8.00	20.00	20.37	20.0

- Locating flats and dowels, see page 38.
- Alterations, see page 37.
- Guide Bushing I.D. should be at least .0127mm larger than the punch point that it is used with.

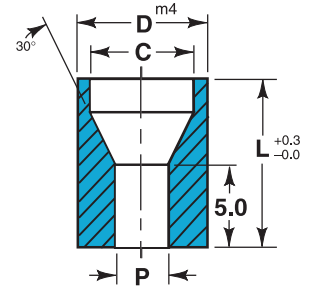


Steel: D2 Rc 60-63
TOLERANCES
 P & W $\begin{matrix} +0.008 \\ -0.000 \end{matrix}$ © 0.008 P to D
 Manufactured to ISO and NAPMA standards where applicable.

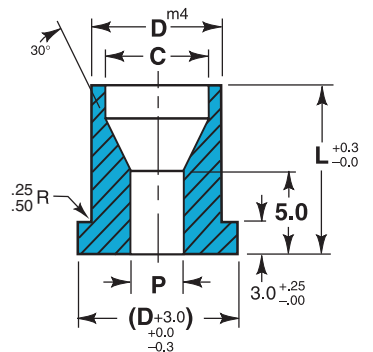
Ordering Example:

Headless 4 ea. GLC 010 x 13 x 4.50
 Head-Down 4 ea. GDO 013 x 16 x 2.50 x 6.00 LM1
 Head-Up 4 ea. GUS 008 x 10 x 3.00 LM1

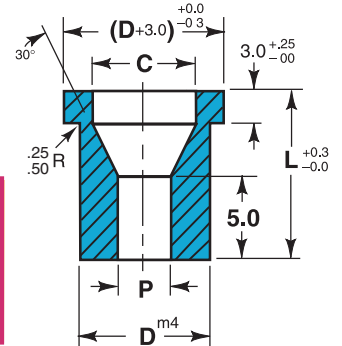
GL-HEADLESS



GD-HEAD-DOWN



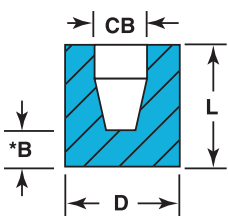
GU-HEAD-UP



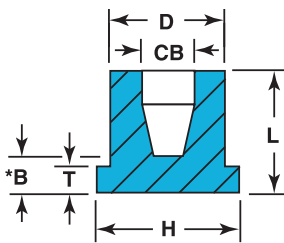
Ordering Example:

Headless 4 ea. GLC 010 x 13 x 4.50
 Head-Down 4 ea. GDO 013 x 16 x 2.50 x 6.00 LM1
 Head-Up 4 ea. GUS 008 x 10 x 3.00 LM1

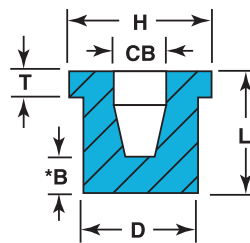
HL HEADLESS



HD HEAD DOWN



HU HEAD UP



For Round and Shaped Punches

- Eliminate Vibration
- Will not wear or gall punch
- Will not distort alignment because the punch shears its own bore.

Headless	Head Down	Head Up	D $\begin{matrix} +0.08 \\ +0.18 \end{matrix}$	L ±0.15				Punch P/W Range	H $\begin{matrix} +0 \\ -0.3 \end{matrix}$	CB	T ±0.15
				8	10	13	16				
HL-006	HD-006	HU-006	6.0	●	●	●		1.0-3.4	9.0	3.5	3.0
HL-008	HD-008	HU-008	8.0		●	●	●	1.0-4.9	11.0	5.2	3.0
HL-010	HD-010	HU-010	10.0		●	●	●	1.0-6.5	13.0	7.2	3.0
HL-013	HD-013	HU-013	13.0		●	●	●	2.5-7.9	16.0	9.2	3.0
HL-016	HD-016	HU-016	16.0			●	●	3.0-9.5	19.0	11.2	3.0

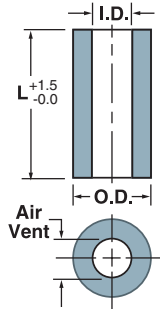
Ordering Example:

8 ea. HL 010 x 13
 6 ea. HD 013 x 16
 10 ea. HU 008 x 10

* The counterbore "CB" is so constructed that the land length equals 1.5 x P.

PORTER Urethane Punch Strippers

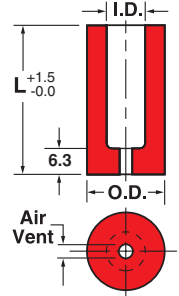
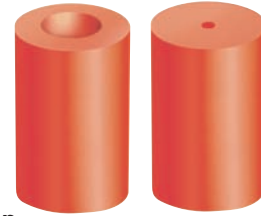
Durathane Open End Punch Strippers



All are oil and solvent resistant 95A durometer. All provide greater pressures than equal sized steel die springs. All are easy to install and dampen vibration. Pop-On's closed end gives more positive stripping and full stripping around periphery of punch point. Open end more economical.

Ordering Example:
Quantity Description
6 O-37A

Pop-On Closed End Punch



Ordering Example:
Quantity Description
7 U-62B

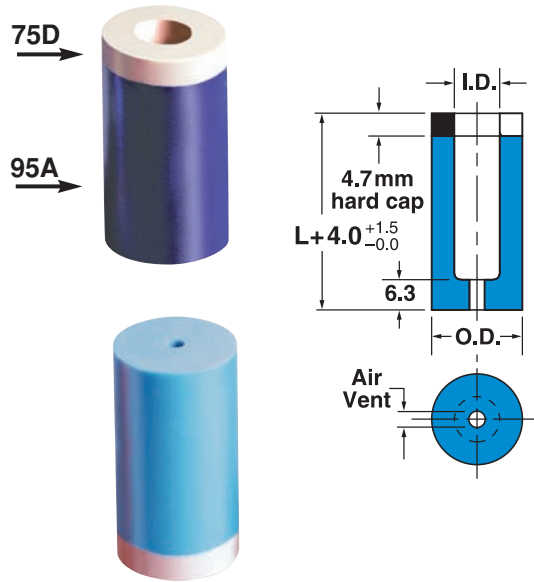
I.D. mm	O.D. mm	Length L mm	Catalog Number	Approx. Stripping Pressure in kg at deflection of		
				4 mm	7 mm	10 mm
5	18	35	O-005	125 kg	200 kg	
		45	O-005A	115 kg	175 kg	
		55	O-005B	105 kg	150 kg	
6	19	35	O-006	140 kg	240 kg	
		45	O-006A	135 kg	230 kg	
		55	O-006B	110 kg	190 kg	240 kg
		65	O-006C	90 kg	130 kg	200 kg
8	21	35	O-008	160 kg	250 kg	
		45	O-008A	150 kg	225 kg	
		55	O-008B	135 kg	200 kg	
		65	O-008C	120 kg	185 kg	290 kg
		75	O-008D	100 kg	165 kg	270 kg
10	23	35	O-010	210 kg	350 kg	
		38	O-010A	190 kg	310 kg	
		45	O-010B	175 kg	285 kg	
		47	O-010C	160 kg	270 kg	
		55	O-010D	145 kg	250 kg	325 kg
		65	O-010E	130 kg	220 kg	290 kg
		75	O-010F	115 kg	190 kg	265 kg
13	26	35	O-013	260 kg	390 kg	
		38	O-013A	225 kg	360 kg	
		45	O-013B	215 kg	340 kg	
		47	O-013C	165 kg	270 kg	
		55	O-013D	150 kg	240 kg	300 kg
		65	O-013E	130 kg	200 kg	250 kg
		75	O-013F	105 kg	160 kg	200 kg
16	30	35	O-016	300 kg	460 kg	
		38	O-016A	260 kg	420 kg	
		45	O-016B	240 kg	390 kg	
		47	O-016C	235 kg	385 kg	
		55	O-016D	220 kg	360 kg	460 kg
		65	O-016E	200 kg	330 kg	420 kg
		75	O-016F	170 kg	290 kg	360 kg
20	38	38	O-020	280 kg	420 kg	
		47	O-020A	240 kg	390 kg	
		55	O-020B	200 kg	350 kg	550 kg
		65	O-020C	165 kg	300 kg	450 kg
		75	O-020D	150 kg	270 kg	400 kg
25	50	35	O-025	1200 kg	1800 kg	
		38	O-025A	1100 kg	1600 kg	
		45	O-025B	1000 kg	1500 kg	
		47	O-025C	900 kg	1400 kg	
		55	O-025D	700 kg	1150 kg	1650 kg
		65	O-025E	600 kg	1000 kg	1450 kg
		75	O-025F	500 kg	850 kg	1300 kg

I.D. mm	O.D. mm	Length L mm	Catalog Number	Approx. Stripping Pressure in kg at deflection of		
				3 mm	6.5 mm	9.5 mm
5	18	35	M-005	125 kg	200 kg	
		45	M-005A	115 kg	175 kg	
		55	M-005B	105 kg	150 kg	
6	19	35	M-006	140 kg	240 kg	
		45	M-006A	135 kg	230 kg	
		55	M-006B	110 kg	190 kg	240 kg
		65	M-006C	90 kg	130 kg	200 kg
8	21	35	M-008	160 kg	250 kg	
		45	M-008A	150 kg	225 kg	
		55	M-008B	135 kg	200 kg	
		65	M-008C	120 kg	185 kg	290 kg
		75	M-008D	100 kg	165 kg	270 kg
10	23	35	M-010	210 kg	350 kg	
		38	M-010A	190 kg	310 kg	
		45	M-010B	175 kg	285 kg	
		47	M-010C	160 kg	270 kg	
		55	M-010D	145 kg	250 kg	325 kg
		65	M-010E	130 kg	220 kg	290 kg
		75	M-010F	115 kg	190 kg	265 kg
13	26	35	M-013	260 kg	390 kg	
		38	M-013A	225 kg	360 kg	
		45	M-013B	215 kg	340 kg	
		47	M-013C	165 kg	270 kg	
		55	M-013D	150 kg	240 kg	300 kg
		65	M-013E	130 kg	200 kg	250 kg
		75	M-013F	105 kg	160 kg	200 kg
16	30	35	M-016	300 kg	460 kg	
		38	M-016A	260 kg	420 kg	
		45	M-016B	240 kg	390 kg	
		47	M-016C	235 kg	385 kg	
		55	M-016D	220 kg	360 kg	460 kg
		65	M-016E	200 kg	330 kg	420 kg
		75	M-016F	170 kg	290 kg	360 kg
20	38	38	M-020	280 kg	420 kg	
		47	M-020A	240 kg	390 kg	
		55	M-020B	200 kg	350 kg	550 kg
		65	M-020C	165 kg	300 kg	450 kg
		75	M-020D	150 kg	270 kg	400 kg
25	50	35	M-025	1200 kg	1800 kg	
		38	M-025A	1100 kg	1600 kg	
		45	M-025B	1000 kg	1500 kg	
		47	M-025C	900 kg	1400 kg	
		55	M-025D	700 kg	1150 kg	1650 kg
		65	M-025E	600 kg	1000 kg	1450 kg
		75	M-025F	500 kg	850 kg	1300 kg

HARD HAT

Closed End Punch Strippers

I.D. mm	O.D. mm	Length L mm	Catalog Number	Approx. Stripping Pressure in kg at deflection of		For Punch Length
				3.0 mm	6.5 mm	
6	19	25	UHL00625	164 kg	275 kg	50 mm
		31	UHL00631	150 kg	255 kg	56 mm
		38	UHL00638	140 kg	241 kg	63 mm
		46	UHL00646	130 kg	225 kg	71 mm
		55	UHL00655	116 kg	210 kg	80 mm
10	23	28	UHH01028	246 kg	390 kg	63 mm
		31	UHL01031	240 kg	385 kg	50 mm
		36	UHH01036	215 kg	360 kg	71 mm
		38	UHL01038	205 kg	350 kg	63 mm
		45	UHH01045	190 kg	327 kg	80 mm
		46	UHL01046	185 kg	324 kg	71 mm
		55	UHL01055	173 kg	250 kg	80 mm
		55	UHH01055	173 kg	250 kg	90 mm
		65	UHH01065	140 kg	198 kg	100 mm
13	26	31	UHL01331	305 kg	435 kg	50 mm
		36	UHH01336	270 kg	385 kg	71 mm
		38	UHL01338	265 kg	370 kg	63 mm
		45	UHH01345	200 kg	310 kg	80 mm
		46	UHL01346	192 kg	295 kg	71 mm
		55	UHL01355	150 kg	260 kg	80 mm
		55	UHH01355	150 kg	260 kg	90 mm
		65	UHH01365	140 kg	210 kg	100 mm
16	30	36	UHH01636	277 kg	425 kg	71 mm
		38	UHL01638	267 kg	420 kg	63 mm
		45	UHH01645	249 kg	388 kg	80 mm
		46	UHL01646	245 kg	384 kg	71 mm
		55	UHH01655	210 kg	365 kg	90 mm
		55	UHL01655	180 kg	276 kg	80 mm
		65	UHH01665	175 kg	345 kg	100 mm
20	38	36	UHH02036	290 kg	420 kg	71 mm
		38	UHL02038	275 kg	405 kg	63 mm
		45	UHH02045	245 kg	387 kg	80 mm
		46	UHL02046	240 kg	385 kg	71 mm
		55	UHL02055	210 kg	340 kg	80 mm
		55	UHH02055	210 kg	340 kg	90 mm
		65	UHH02065	185 kg	320 kg	100 mm
25	50	45	UHH02545	930 kg	1450 kg	80 mm
		46	UHL02546	910 kg	1425 kg	71 mm
		55	UHL02555	725 kg	1215 kg	80 mm
		55	UHH02555	725 kg	1215 kg	90 mm
		65	UHH02565	640 kg	1015 kg	100 mm
32	57	45	UHH03245	1485 kg	1775 kg	80 mm
		46	UHL03246	1480 kg	1750 kg	71 mm
		55	UHL03255	1285 kg	1530 kg	80 mm
		55	UHH03255	1285 kg	1530 kg	90 mm
		65	UHH03265	1075 kg	1300 kg	100 mm



Ordering Example:
Quantity Description
 13 UHL01338

Ordering Example:
Quantity Description
 6 UHH01665

UHL is designed for light duty retainer

UHH is designed for heavy duty retainer

All the benefits of the Pop-On Stripper plus:

- Patented 75D Hard-Hat designed to withstand the sharp edges of standard retainers.
- Co-injection molded to blend 2 different durometers of Urethane into one homogeneous piece without adhesive or bonding agents.
- 4 mm preload in for positive holding pressure as the punch contacts the material.